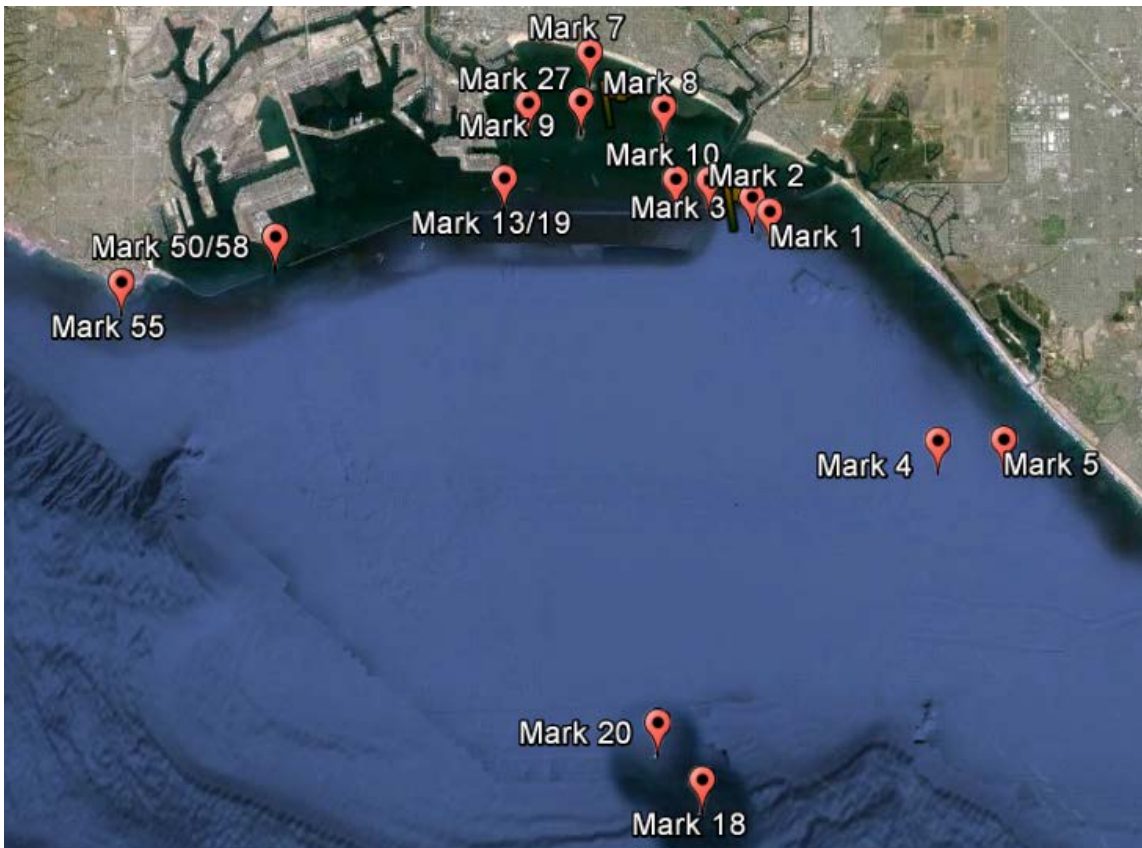
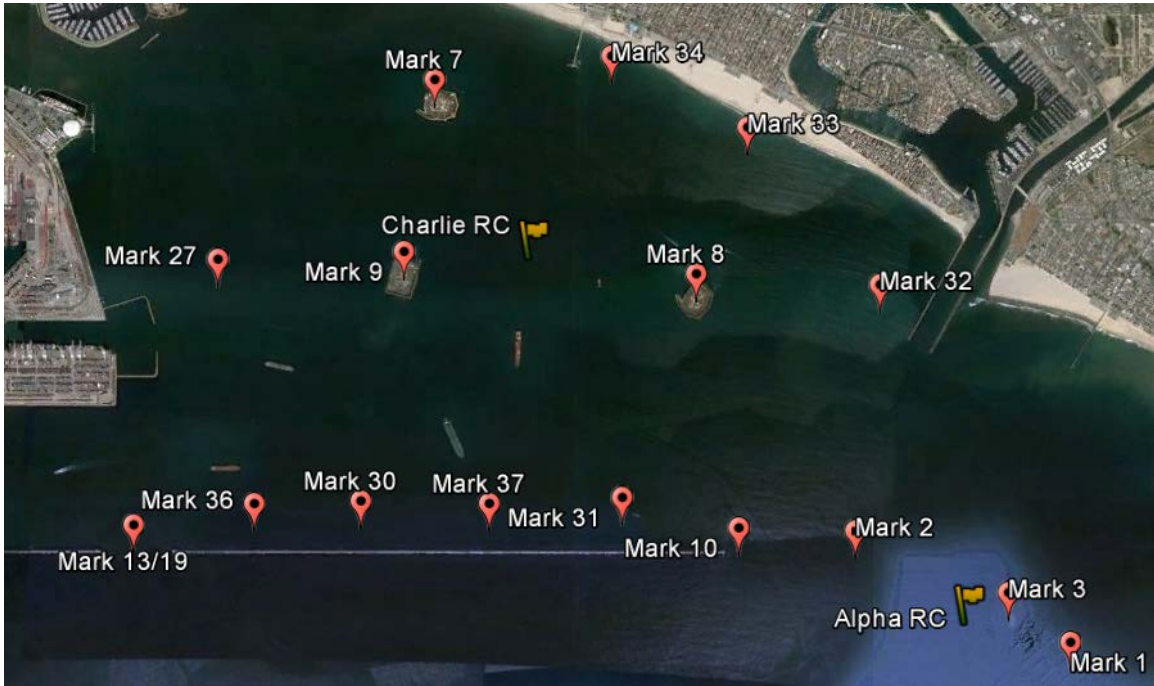


Ullman Sails Long Beach Race Week

Attachment B – Random Leg Courses



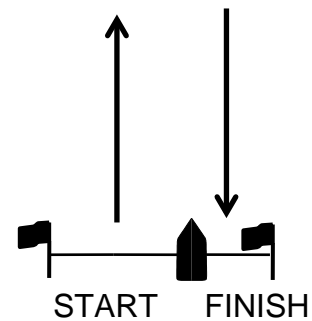
Ullman Sails Long Beach Race Week

CHARLIE COURSE STARTS

Course #	Distance	Mark Rounding Order (all marks rounded to port)
A	10.2	Start - 50/58 - 13/19 - Finish
B	12.9	Start - 13/19 - 50/58 - 9s - 36 - Finish
C	15.0	Start - 55 - Finish
D	17.8	Start - 13/19 - 4 - 13/19 - Finish
E	23.7	Start - 50/58 - 4 - 13/19 - Finish
F	12.5	Start - 13/19 - 3 - 32 - 34 - 7 - 27 - 36 - Finish
G	19.8	Start - 13/19 - 20 - 13/19 - Finish
H	17.6	Start - 13/19 - 3 - 32 - 34 - 7 - 27 - 36- 10s - 13/19 - Finish
I	18.9	Start - 13/19 - 3 - 32 - 34 - 7 - 27 - 36- 8s - 10s - 13/19 - Finish
J		Course Provided By Race Committee

All Marks Rounded to Port unless otherwise indicated.

Start and Finish are as shown in the diagram opposite



Ullman Sails Long Beach Race Week

Schedule of Permanent Marks

MARK	Mark Description	Latitude	Longitude
Start Finish	Charlie Course Race Committee (Approx)	33°44'32.67"N	118° 9'7.26"W
1	Anaheim Bay Channel Buoy - R "2" QR Whistle	33°42'55.26"N	118° 6'33.41"W
3	Platform Esther	33°43'7.10"N	118° 6'51.20"W
4	Platform Eva	33°39'42.25"N	118° 3'43.37"W
5	Platform Emmy	33°39'43.20"N	118° 2'36.60"W
7	Island White	33°45'9.38"N	118° 9'35.77"W
8	Island Chaffee	33°44'23.09"N	118° 8'20.73"W
9	Island Freeman	33°44'28.40"N	118° 9'44.60"W
10	East End of Long Beach Breakwater	33°43'22.56"N	118° 8'8.56"W
13	West End of Long Beach Breakwater "Queen's Gate"	33°43'22.90"N	118°11'8.90"W
18	Platform Ellen & Elly	33°34'57.00"N	118° 7'42.00"W
19	East End of Middle Breakwater	33°43'22.90"N	118°11'8.90"W
20	Platform Edith	33°35'45.00"N	118° 8'27.00"W
27	R "2" Buoy near Pier J	33°44'26.56"N	118°10'38.00"W
50	West End of the Middle Breakwater - Angel's Gate	33°43'38.34"N	118°14'42.39"W
55	Point Fermin Whistle Buoy - R "6" FI R 4sec Whistle	33°41'55.70"N	118°17'30.00"W
58	East End of the San Pedro Breakwater Angel's Gate	33°42'29.37"N	118°15'3.69"W

Schedule of Semi-Permanent Marks

MARK	Mark Description	Latitude	Longitude
2	Spar Buoy At former location of Belmont Platform.	33° 43.260'N	118° 07.590'W
30	Spar Buoy 100 yards north of West Measured Mile Marker	33° 43.490'N	118° 09.900'W
31	Spar Buoy 100 yards north of East Measured Mile Marker	33° 43.490'N	118° 08.690'W
32	Spar Buoy 1/2 mile NW from the West End of the Alamitos Bay Jetty.	33° 44.510'N	118° 07.330'W
33	Spar Buoy 1 mile NW of West End of Alamitos Bay Jetty.	33° 44.960'N	118° 08.100'W
34	Spar Buoy 500 yards east from the end of Belmont Pier.	33° 45.260'N	118° 08.750'W
36	Spar Buoy 1/2 mile west of the West Measured Mile Marker, and 100 yards north of the Breakwater	33° 43.470'N	118° 10.450'W
37	Spar Buoy 100 yards north of the « mile Measured Mile Marker, midway between Mark 31 and Mark 30.	33° 43.480'N	118° 09.310'W

1. Mark locations vary slightly due to tide changes which affects swing.
2. Marks may not be on station for various reasons.
3. The Spar Buoys are Yellow.
4. Locations and distances, when given are approximate
5. Chart references: No's, 18746 & 18749