

Ullman Sails Long Beach Race Week



June 26 – 28, 2015
Alamitos Bay Yacht Club & Long Beach Yacht Club
Long Beach, California USA

<http://www.lbrw.org>



ULLMAN SAILS LONG BEACH RACE WEEK INCLUDES THE FOLLOWING CHAMPIONSHIPS

CATALINA 37 NATIONAL CHAMPIONSHIP

J109 WEST COAST CHAMPIONSHIP

OPEN 5.70 PACIFIC COAST CHAMPIONSHIP

SCHOCK 35 PACIFIC COAST CHAMPIONSHIP

J/70, J/80, J/105, J/109 AND J/120 SOUTHERN CALIFORNIA HIGH POINT SERIES

NOTICE OF RACE

The Organizing Authorities for Long Beach Race Week will be the Alamitos Bay Yacht Club (ABYC), 7201 East Ocean Blvd, Long Beach, CA 90803 and the Long Beach Yacht Club (LBYC), 6201 Appian Way, Long Beach, CA 90803.

1. RULES

- 1.1. The Regatta will be governed by the rules as defined in *The Racing Rules of Sailing*.
- 1.2. PHRF classes must carry the safety equipment required by the U.S. Safety Equipment Requirements for U.S. Nearshore Races (Definition 1.0.3). Refer to: <http://www.ussailing.org/safety/equipment-and-requirements/>.
- 1.3. For PHRF classes, the Marine Industry Racer (MIR) rule of PHRF of Southern California will not apply to this regatta.
- 1.4. The Catalina 37 Fleet will be subject to on-the-water umpiring according to Racing. Rule Addendum Q.
- 1.5. Appendix T, Section A, Penalties While Racing, rule T1 will apply.
- 1.6. Appendix T, Section B, Post-Race Penalties, rule T2 will apply.
- 1.7. Appendix T, Section C, Expedited Hearings, rule T3 and rule T4.5 only will apply.
- 1.8. Appendix T, Section D, Arbitration, rule T5 will apply.

2. ADVERTISING

- 2.1. For boats of the Catalina 37 class, the SIs state that advertising may not be added to or removed from any equipment supplied with the boat from Long Beach Sailing Foundation.

3. ELIGIBILITY AND ENTRY

- 3.1. This regatta is open to the following **One-Design classes**: Beneteau 36.7, Beneteau 40.7, Cal 25, Catalina 37, Farr 40, J/105, J/109, J/120, J/24, J/29, J/70, J/80, Melges 20, Melges 24, Olson 30, Open 5.70, Viper 640, Schock 35, Ultimate 20. Additional One-Design classes will be accepted at the discretion of the Organizing Authorities based on the number of entries and the classes that are established. Submit requests to info@lbrw.org.
- 3.2. **One-Design classes** not having five (5) entries by June 24, 2015 shall be automatically registered in a PHRF class, if applicable, unless permitted otherwise by the Organizing Authorities.
- 3.3. This regatta is open to **Performance Handicap Racing Fleet (PHRF)** boats having a PHRF handicap of 222 or less. PHRF boats will be separated into classes based on entries received and performance characteristics of the boats.
- 3.4. **PHRF** boats wishing to sail random leg courses should indicate so on their entry form.
- 3.5. Eligible boats must enter online at <http://www.lbrw.org>.
- 3.6. An early entry discount as shown in NOR 4 applies to entries received on or before **June 8, 2015**. To receive the discount, the Organizing Authorities must receive a completed online entry form with the

Ullman Sails Long Beach Race Week

appropriate fee and attachments by that date. **No entries will be accepted after 1800 PST, Tuesday, June 23, 2015** without the approval of the Principal Race Officer.

- 3.7. This regatta will be a level C regatta for the J/105 class as defined by Membership and Eligibility rule 3.6 of the J/105 Class Association Rules.
- 3.8. If an individual cancels their participation in race week, then the refund policy is as follows:
 - a) Notice period of Cancellation - Greater than 24 hours: 100% refund of the entry fee less administrative fee of \$50
 - b) Notice period of Cancellation - Less than 24 hours or failure to attend: No refund after June 24, 2015
- 3.9. **PHRF Class Breaks:** In an effort to provide 'like racing' under **PHRF**, boat displacement and other factors will be considered when determining class breaks.

4. FEES

Required Fees are as follows:

LOA	Early Entry on or before June 8, 2015	Standard Entry
30 Feet and Under including J/29, J/80, Melges 24, Olson 30, Open 5.70, & PHRF	\$180	\$230
31-40 Feet including Farr40, J/105, J/120, Schock 35, & PHRF	\$240	\$290
41-50 Feet including PHRF	\$315	\$365
Over 50 Feet including PHRF	\$365	\$415
Catalina 37 includes Charter Fee & Class Assoc.	\$1,270	\$1,320

A boat's LOA should be rounded to the lower whole number (e.g. 35' 8" = 35') to determine fees. There will be no social fee.

Your entry fee includes the following:

- Entry to Long Beach Race Week
- ABYC Friday After Race Party, including live band, complimentary hors d'oeuvres and no host bar
- LBYC Saturday After Race Party, including a live band, Mt Gay Rum Party, complimentary hors d'oeuvres and no host bar
- Sunday Trophy Presentation Party, including complimentary hors d'oeuvres and no host bar

- Free berthing for the regatta for ALL boats. To coordinate please see NOR 11.
- Catalina 37 entry fee includes your charter fee and class association fee, but not your damage deposit.

5. SCHEDULE

- 5.1. Registration at LBYC:

<i>Thursday June 25, 2015</i>	<i>From 1200 to 1800</i>
<i>Friday June 26, 2015</i>	<i>From 0800 to 1000</i>
- 5.2. Measurement, Inspection and Crew Weigh-In at LBYC:

<i>Thursday June 25, 2015</i>	<i>From 1200 to 1800</i>
<i>Friday June 26, 2015</i>	<i>From 0800 to 1000</i>
- 5.3. Competitors' Briefing at LBYC:

<i>Friday June 26, 2015</i>	<i>From 1030 to 1100</i>
-----------------------------	--------------------------
- 5.4. Dates of Racing:

<i>Friday June 26, 2015</i>	<i>1st Warning</i>	<i>1255</i>
<i>Saturday June 27, 2015</i>	<i>1st Warning</i>	<i>1155</i>
<i>Sunday June 28, 2015</i>	<i>1st Warning</i>	<i>1155</i>



6. MEASUREMENTS

- 6.1. Crew weigh-in is required for One Design classes whose rules specify crew weight limits. The classes include Farr 40, J/24 and J/105.
- 6.2. All boats are subject to additional measurement at any time.
- 6.3. Following each day's racing any boat may be inspected for compliance with their handicap certificate.

7. SAILING INSTRUCTIONS

- 7.1. Sailing Instructions (SIs) will be available at registration.
- 7.2. Preliminary SIs will be available on the Long Beach Race Week website <http://www.lbrw.org> on or before June 13, 2015.
- 7.3. The Organizing Authorities reserve the right to amend versions of the SIs on the website without prior notice.

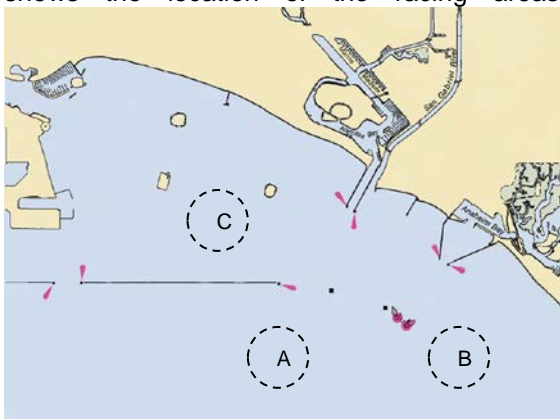
8. VENUE

- 8.1. The ABYC  and LBYC  are located on Alamitos Bay, which is situated in the southeastern part of Long Beach California. The diagram below shows locations of the two

Ullman Sails Long Beach Race Week



- 8.2. It is anticipated that there will be three (3) separate racing areas, each with its own race committee. As entries and class splits are not known in advance, it is not possible to assign racing areas in advance. The diagram below shows the location of the racing areas.



9. THE COURSES

- 9.1. The courses for One-Design and PHRF classes will be of a windward leeward configuration.
- 9.2. The courses for the Random Leg fleet will be selected from those published in the Sailing Instructions. Those courses will include a variety of course lengths around marks and landmarks in San Pedro Bay area, both inside and outside the Federal breakwater.

10. SCORING

- 10.1. Seven (7) races are scheduled of which three (3) must be completed to constitute a series for the One-Design, and PHRF classes.
- 10.2. Random Leg Fleets: Three (3) races are scheduled of which one (1) must be completed to constitute a series.
- 10.3. The regatta will be scored as provided in the RRS except that all a boat's race scores will count (i.e. no scores will be excluded).

- 10.4. PHRF Classes will be scored using the base handicaps provided by the PHRF Southern California. All PHRF Classes will be scored using time-on-time scoring. For each boat, the "Time Correction Factor" (TCF) used will be calculated based on the following formula: $TCF = 650 / (625 + PHRF)$ where "PHRF" is a boat's base SoCal PHRF handicap.

11. BERTHING

- 11.1. We offer free storage and berthing for boats from Sunday, June 21, 2015 until Tuesday, June 30, 2015.
- 11.2. Alamitos Bay Marina
- The number of transient slips and dock space available in Alamitos Bay Marina is limited. Rafting will be necessary and registration is required. Boats requiring a berth in Alamitos Bay Marina for Long Beach Race Week should indicate their intended arrival and departure dates on their online entry form.
 - Berthing assignments will be published on the Long Beach Race Week website. <http://www.lbrw.org> and available at registration.
 - Boats requesting berthing before Sunday, June 21, 2015 or after Tuesday, June 30, 2015 **MUST** contact the LBYC Waterfront Director for further information: 562-493-5173 or e-mail raceoffice@lbyc.org. Longer term storage is very limited and will be assigned on a first come basis.
- 11.3. Alamitos Bay Yacht Club Yard
- Due to space limitations, vehicle parking on ABYC grounds is restricted. Off-street parking is available across the street in municipal lots. Participants should obtain vehicle parking passes from the ABYC office.
 - The Regatta fee includes launching, recovery, and storage for visiting competing boats for the period specified above. Please note ABYC is closed on Monday and Tuesday.
 - Visiting competing boats may request extended storage IN ADVANCE by contacting the ABYC office. The cost is \$10.00 per day paid in advance.
 - Any boat or trailer found on ABYC property without prior written authorization from ABYC is subject to impound and associated fees.

Ullman Sails Long Beach Race Week

- e) Boats requesting yard storage before Sunday, June 21, 2015 or after Tuesday, June 30, 2015 **MUST** contact the ABYC Office for further information: 562-434-9955 or e-mail abyc@abyc.org.

12. RADIO COMMUNICATION

- 12.1. The Race Committee will make use of VHF radios to keep sailors informed of Start Times, On Course Side (OCS), Postponements and other information regarding the racing.
- 12.2. Failure of the Race Committee to hail, failure of the amplification system or radios, the order of the hail, or failure of a boat to hear a hail shall not be grounds for a boat to request redress. This instruction changes RRS 41 and 62.1.

13. PRIZES

- 13.1. Boat of the Day and daily awards to winners of Friday and Saturday racing in each established fleet will be presented.
- 13.2. Overall series awards will be presented to each established fleet.
- 13.3. The following prizes will be presented to individual boats:

Satariano Boat of the Week

To the class winner whose class featured the closest, most competitive racing for the series

PHRF Boat of the Week

To the PHRF class winner whose class featured the closest, most competitive racing for the series

Catalina 37 National Championship

Winner of the Catalina 37 class

J/109 West Coast Championship

Winner of the J/109 class

Open 5.70 Pacific Coast Championship

Winner of the Open 5.70 class

Schock 35 Pacific Coast Championship

Winner of the Schock 35 class

Kent Golison Family Trophy

Highest placing boat in the regatta that is sailed by at least three members of an immediate family

Travel Trophy

Boat owner who has traveled the farthest (based on hometown)

Yacht Club Challenge

The yacht club whose team has the lowest combined score. One yacht on each team must compete in the Catalina 37 class. A yacht club may enter up to three (3) individual teams using a single Catalina 37 entry for multiple teams.

14. DISCLAIMER OF LIABILITY

Competitors participate in this regatta entirely at their own risk. See rule 4, Decision to Race. The Organizing Authorities will not accept liability for material damage or personal injury or death sustained in conjunction with or prior to, during or after this regatta.

** Informational note: The United States Coast Guard (USCG) requires that all vessels carry a USCG approved personal floatation device for each member of the crew on a boat.*

15. RIGHT TO USE NAME AND LIKENESS

By participating in the Long Beach Race Week a competitor automatically grants to the organizers and its sponsors the right in perpetuity to make, use and show, from time to time at their discretion, any motion pictures and live, taped or filmed television and other reproductions of him or her during the period of the competition without compensation.

16. CHARTERED BOATS

Catalina 37 boat chartering will be on first-come first-served basis. Please note that your reservation is not secured until your full entry/charter fee is paid to the regatta per NOR sections 3 and 4. For information about chartering from Long Beach Sailing Foundation, or to make a reservation, please contact:

Charter Manager: Mary Voigt

Phone: (760) 568-2163

Email: chartermanager@lbycsf.org

17. HOSPITALITY AND SOCIAL

Information for local hotels can be found at the Long Beach Race Week website. <http://www.lbrw.org>

18. AMENDMENTS TO THIS NOTICE

The Organizing Authorities reserves the right to amend this notice. Any amendments of this notice made after May 1, 2015 will be posted on the Long Beach Race Week website and e-mailed to those owners whose entries have been accepted.

19. QUESTIONS / CONTACT

Please email questions to: info@lbrw.org.